



## WEB TECHNIQUES

910 Bolger Ct. Fenton, MO 63026

Office: (636) 343-0806

Fax: (636) 343-6629

Toll Free: 1-800-325-9777

[sales@webtechniquesinc.com](mailto:sales@webtechniquesinc.com)

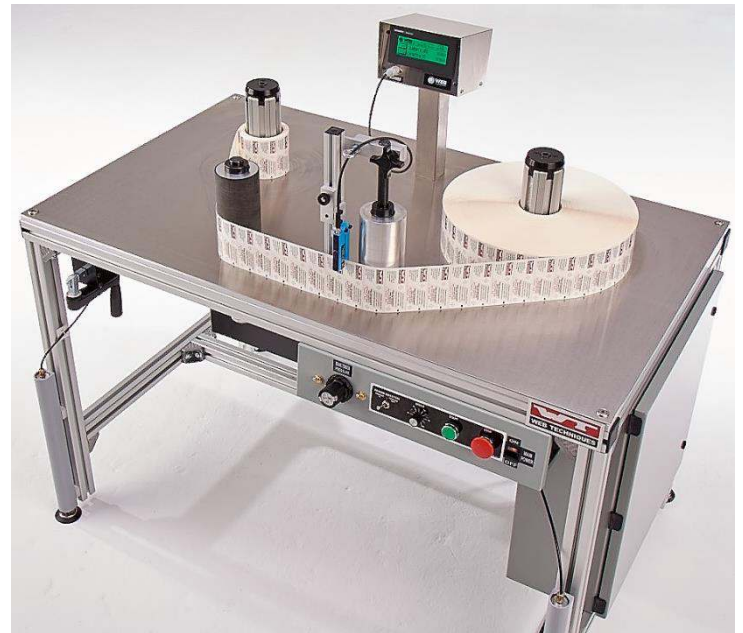
[www.webtechniquesinc.com](http://www.webtechniquesinc.com)

## NEWSLETTER 12-15

### PRODUCT SPOTLIGHT

The newly designed WT-35 family of systems (WT-35 & WT-35VSL) offers up full bi-directional functionality with the speed and quality you have come to expect from a Web Techniques rewind system.

Our redesigned systems have remained fast and efficient while integrating an easy to use and learn touch screen interface as well as keeping the same manual control layout from the WT-25 family design. Whether you need a high end bi-directional vision system or simply want to save time and money to reset your label copy position after inspection, the WT-35 is the system for you. Visit our You Tube channel if you would like to see the WT-35 or any of our other revolutionary products in action: [Web Techniques You Tube Channel](#)



WT-35 Bi-Directional System

### DON'T LET STATIC SLOW YOU DOWN!!!

Is static build-up slowing you down or the reason your equipment is needing costly repairs? If so a Web Techniques deionizer could help alleviate your static issues. (see Figure 1 to the right)

The deionizing system can be added to a newly purchased Web Techniques rewind system, or can be field retrofitted to any existing label rewinding system or press.

The Web Techniques Deionizer is designed to be used on table top rewind equipment or small presses. It is field installable and includes:

- Quantity one (1) 9" Deionizing Bar.
- 115V AC (5kv) Power Supply that can power up to two deionizers.
- Suction cup mounting system for quick installation and removal.
- Aluminum foot mounting bracket for permanent mounting.

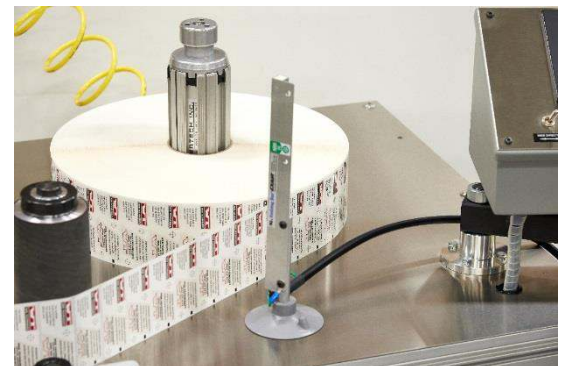


Figure 1

#### Specifications:

- Rapid Static Decay.
- Compact system designed for smaller systems.
- Effective up to 2" (51mm) from static source.
- Shockless, non-radioactive.
- Rugged design for industrial environments.
- Easy installation and can be retrofitted on any press or rewind system.
- Low maintenance.
- Fully assembled with all mounting hardware.

# WT-25(LC & LCI) SYSTEMS STILL SUPPORTED



Web Techniques **will** continue to support the WT-25, WT-25LC, WT-25LCI, WT-25VS & WT-25VSL products with fully stocked parts and system rebuilds. Give us a call and we can help get your system back to peak running performance!

After 39 years of support we will no longer be manufacturing components for the WT-15 or WT-20 product lines. Almost all of these tables have been in the field for 25+ years and we have finally moved on. If you have a WT15 or WT-20 system, contact us and we will show you how we can actually save you money and allow you to get much increased throughput from the WT-30 & WT-35 family of systems!

## FEATURES WITH BENEFITS

Plate cutting and plate mounting are significant factors in your production costs. Plate cutters from Web Techniques, available in two models; will speed up your make ready process and improve accuracy at all stages of production.

The secret of the WT-1 & WT-2 (Figure 2 to the right) system is providing perfect bevel cuts for butt joints producing a minimum gap once the plate is applied to a cylinder. The bevel is produced without tilting the work table surface.



Figure 2

## COREHOLDER CORNER

### Lift-Off Cam-Lock Coreholders

This is the most economical coreholder style and is the type supplied as "standard" equipment. The advantage of Lift-Off type coreholders is that they can be installed and removed from a roll of labels while the roll remains on the machine surface. Heavy rolls can then be loaded or unloaded by sliding them on the table surface. **Notes:** Cam-Lock style coreholders cannot be used on the rewind spindle if slitting is going to be performed since it can only drive one core. Also, Cam-Lock coreholders cannot be used on metal or poly cores as the machined cam cannot "bite" into the core to secure it in place.



## QUOTE TO LIVE BY!

*"The quality of a person's life is in direct proportion to their commitment to excellence, regardless of their chosen field of endeavor." – Vince Lombardi*

This is my pledge to our customers. If it is not right we will make it right. We follow the Golden Rule at Web Techniques and treat others as we would want to be treated. If you ever have any questions or concerns about a Web Techniques product or service feel free to contact me directly. Thank you for your business!

Todd Hickman

President

[toddh@webtechniquesinc.com](mailto:toddh@webtechniquesinc.com)

**WEB TECHNIQUES**

[www.webtechniquesinc.com](http://www.webtechniquesinc.com)