



Web Techniques
910 Bolger Court, Fenton, MO 63026 USA
PH: (636)343-0806 Fax: (636)343-6629
Toll-Free (800)325-9777
www.webtechniquesinc.com

WT-35 MAIN BELT CHANGE PROCEDURE

STEP 1: ENSURE SYSTEM MAIN POWER SWITCH IS IN THE OFF POSITION AND/OR UNPLUGGED BEFORE PERFORMING THE STEPS BELOW.

STEP 2: SECURING TOP TO FRAME

2-A) Secure angle brackets to top(FIG. 2.1). Use (5) ¼-20 X 5/8" SHCS (C1M5/6302505) and ¼" washer (C1C1/6612500). Hand tighten SHCS to top to make sure top is in correct position. After all are hand tightened, tighten to frame first, then top(FIG. 2.1).



FIG 2.1

STEP 3: ADJUSTING PULLEYS AND BELTS

3-A) Place ½" timing belt (C2 side/90-9318) over motor (FIG 3.1).



FIG 3.1

3-B) Place belts on pulleys (FIG 3.2).

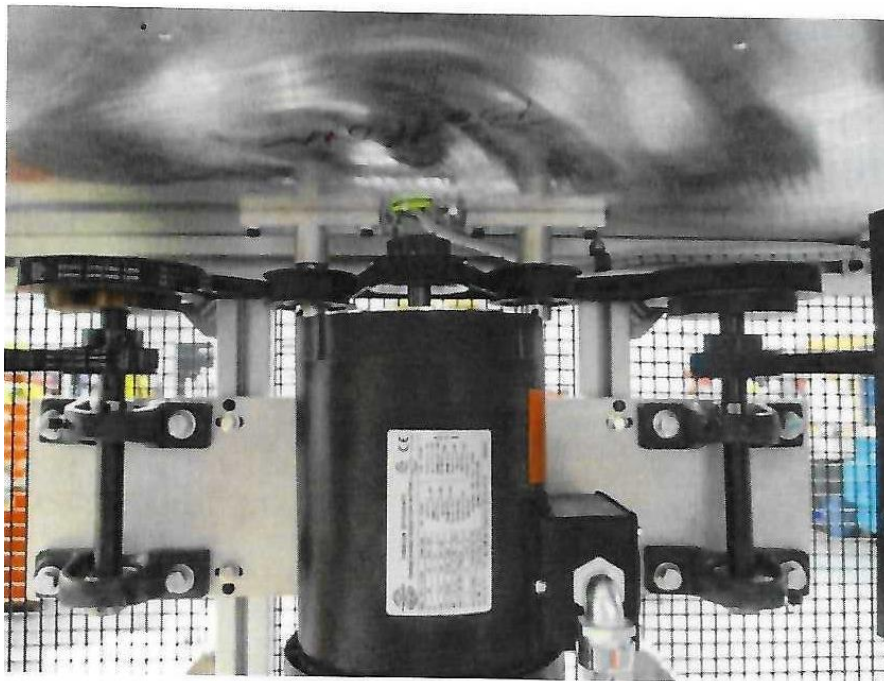


FIG 3.2

3-C) Adjust small belts on shaft assembly to where belts have approximately $\frac{1}{2}$ " give, then tightening bolts on pillow bearing blocks (FIG 3.3).



FIG 3.3

3-D) Use straight edge to make sure pulleys are even with each other and pulleys are parallel to top. Double check screws on shaft assembly are tight (FIG 3.4).



FIG 3.4

STEP 4: POSITIONING ENCLOSURE AND FEEDING CABLES INTO ENCLOSURE

4-A) Feed COM cable, scanner cable, ground wire, and motor power cables through top hole of enclosure (FIG 4.1)

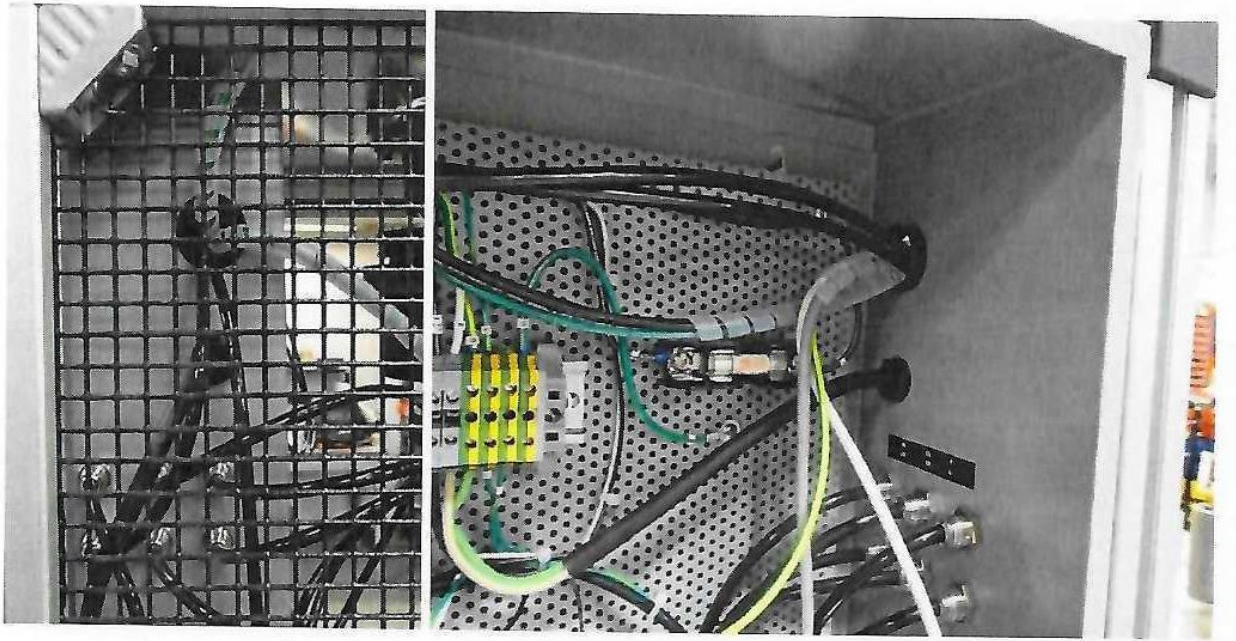


FIG 4.1